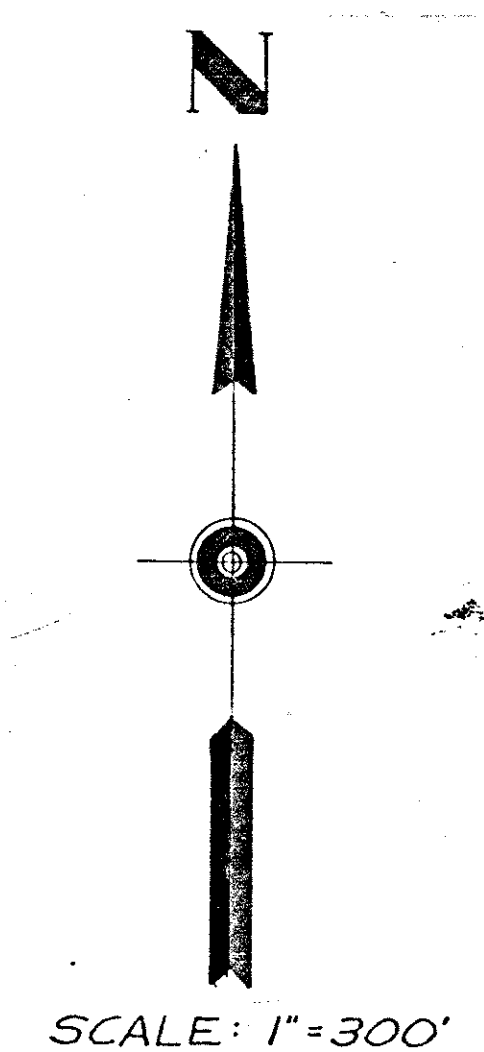
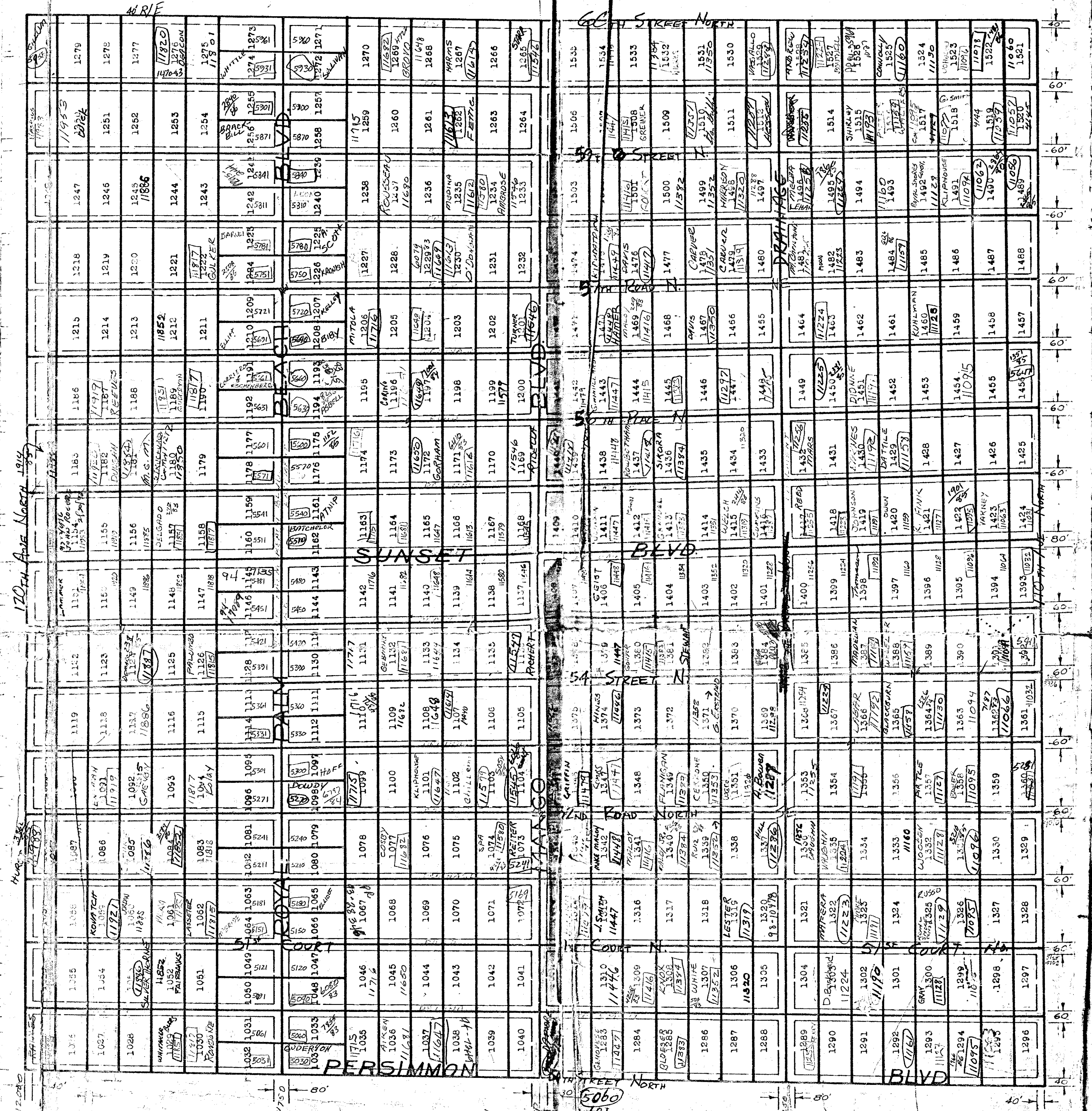


6000'



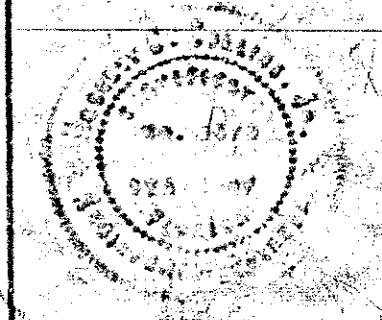
ur0379.igr
 ROYAL PALM BEACH 41-43-2

PALM BEACH COUNTY
 PLANNING, ZONING & BUILDING DEPARTMENT
 P. O. BOX 1548
 WEST PALM BEACH, FLORIDA 33402

SECTION 04, 43 S, R. 41 E, PALM BEACH COUNTY, FLA.

PLOT PLAN
 FOR
 ROYAL PALM BEACH COLONY, INC.

WOOD AND ASSOCIATES, INC.
 FORT PIERCE, FLORIDA



DESIGNED BY A.W.	CHECKED BY	BWG. NO. 7038-A
SCALE 1"=300'	DATE	SHEET 01

THIS IS NOT A RECORDED PLAT